

Dry Ice Production

Dry Ice Pelletizer A120P-D3

part no. 900111

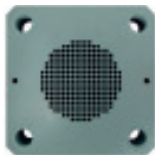


The dry ice pelletizer A120P is a compact, powerful and versatile machine producing high quality dry ice pellets in five different sizes (1.7, 3, 6, 10 and 16 mm) (1/16, 1/8, 1/4 and 5/8 in). Having a production capacity of 120 kg/hr (264.55 lbs/hr) this dry ice machine guarantees quality and flexibility in the daily working process.

The dry ice pelletizer A120P is driven by a powerful hydraulic unit featuring a push button for instant start of production. All functions are controlled by a PLC. Fully automatic control of oil temperature and dry ice snowing process guarantees continuous dry ice production without any supervision right from push button start.

Benefits of an in-house dry ice production:

- If for dry ice blasting: More efficient cleaning results, because: the fresher the dry ice, the more efficient the cleaning
- Shorter production stops
- Reduction of dry ice lost due to sublimation
- Decreased logistics expense connected with purchasing and disposing of dry ice



Extruder plate for 3 mm (1/8 in) pellets

The dry ice pelletizer A120P is standardly equipped with an extruder plate for pellets with a diameter of 3 mm (1/8 in).

Specifications

Production capacity:	120 kg/hr* (264.55 lbs/hr) at 17.5 bar (253.8 psi) CO ₂ inlet pressure
Voltage:	400 V / 50 Hz / 3 Ph + PE (other voltages on request)
Max power consumption:	4 kW
Dimensions (L x W x H):	1'320 x 700 x 1'430 mm (51.97 x 27.56 x 56.29 in)
Weight net:	approx. 340 kg (749.57 lbs) (without hydraulic oil) approx. 360 kg (793.66 lbs) (with hydraulic oil)
Weight packed	approx. 450 kg (992 lbs) (without hydraulic oil)
CO ₂ inlet connection:	1/2" BSP female
CO ₂ source:	CO ₂ storage tank, liquid phase (13 - 21 bar) (188.5 - 304.6 psi)

* 1.7 mm (1/16 in) dry ice pellets can be produced at a max. production capacity of 95 kg/hr (209.44 lbs/hr)

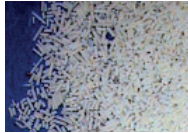




Special features of Dry Ice Pelletizers A120P-D3:

Function and Applications

The dry ice pelletizer A120P requires a liquid CO₂ supply (pressure 13 - 21 bar) (188.5 - 304.6 psi) and power supply of 400 V / 50 Hz / 3 Ph + PE (other voltages available on request). The machine features instant push button start and all functions are controlled by an inbuilt PLC. Dry ice snow is produced in the snowing chamber, pressed and then extruded by a powerful hydraulic unit. To ensure continuous, reliable operation of the pelletizer, oil temperature, oil level, cycle time, motor overload, CO₂ inlet pressure and hydraulic pressure are all monitored and displayed on the control panel.

Options

The dry ice pelletizer A120P is standardly equipped with an extruder plate for pellets with a diameter of 3 mm (1/8 in). 3 mm (1/8 in) pellets are used especially for dry ice blasting purposes. Optional extruder plates for pellets in four other sizes are available. Of course, the A120P can also be delivered standardly equipped with the following extruder plates.

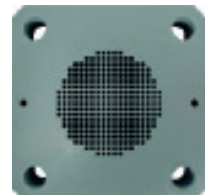
Pellet size	 1.7 mm (1/16 in)	 3 mm (1/8 in)	 6 mm (1/4 in)	 10 mm (3/8 in)	 16 mm (5/8 in)
Operating range	Dry Ice Blasting (structured surfaces)	Dry Ice Blasting	Cooling purposes	Cooling purposes	Cooling purposes

Standardly included in the delivery of Dry Ice Pelletizer A120P-D3:

Extruder plate for 3 mm (1/8 in) pellets

Pellets for **blasting purposes**

part no. 4044839



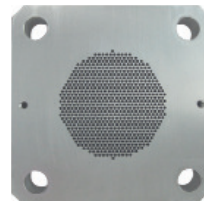
Options for Dry Ice Pelletizer A120P-D3:

Pos. 001

Extruder plate for 1.7 mm (1/16 in) pellets

Pellets for **blasting purposes**
(of surfaces with fine structures)

part no. 4044843

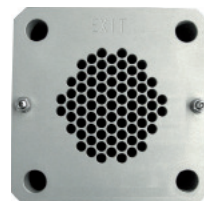


Pos. 002

Extruder plate for 6 mm (1/4 in) pellets

Pellets for **cooling purposes**

part no. 4045031

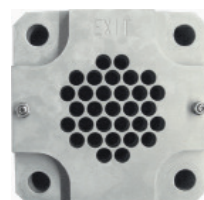


Pos. 003

Extruder plate for 10 mm (3/8 in) pellets

Pellets for **cooling purposes**

part no. 4045030



Pos. 004

Extruder plate for 16 mm (5/8 in) pellets

Pellets for **cooling purposes**

part no. 4044837



Pos. 005

Machine base

For filling of higher storage containers or dry ice blasting units

Increases the total height by 200 mm (7.87 in)

part no. 4044838



Pos. 006

Spare parts kit

Containing a selection of recommended spares for approx.
one to two years of normal operation

part no. 4044491



Options for Dry Ice Pelletizer A120P-D3:

Pos. 007

Production Control System PCS120

For a higher level of automation the pelletizer can be combined with a production control system. Such a production control system allows the regulation of the production quantity or the production time, thus reducing the need for supervision even further, therefore, keeping the requirement for respective personnel to an absolute minimum. With the optional production control system the dry ice pelletizer automatically stops when the set production quantity/production time is reached.

The production control system can also be added to the pelletizer at a later stage if required.

part no. 4045032



Automatic Dry Ice Filling System

For a higher level of automation the pelletizer can be combined with an automatic filling system. The optional automatic filling system, with the appropriate control system, allows a pre-set low dry ice level to automatically start the dry ice pelletizer, with automatic stop at the pre-set high level. Such automatic filling system is the optimum solution wherever the automatic production of an exact dry ice quantity is needed.

The automatic filling system can also be added to the pelletizer at a later stage if required.



Pos. 008

Version 1

part no. 900112

Automatic Dry Ice Filling System small

Platform of 600 x 800 mm (23.62 x 31.49 in)

For the automatic filling of all ASCOJET dry ice blasting units and similar sized blasting machines or smaller dry ice storage containers (e.g. AT131)

Pos. 009

Version 2

part no. 4044486

Automatic Dry Ice Filling System large

Platform of 1'200 x 1'200 mm (47.24 x 47.24 in)

For the automatic filling of larger dry ice blasting machines or larger dry ice storage containers